

UK Collection by

**A****T****H****L****O****N**



# UK COLLECTION BY ATHLON

Cubicle and Locker components:

Partitions / Wall Panels

Cubicle or Locker Doors

Pilasters

IPS Panels

Shower Panelling

Vanity Unit Panelling

Educational / Occasional Furniture:

Tabletops

Benches

## Compact 10mm / 12.7mm

The ultimate material choice for the most demanding applications.

High impact strength and water resistance.

## Thin HPL 0.8 mm

Flexibility of edge design. Postformed or square,

the use of different core substrates allows limitless design.



Excellent moisture resistance



High impact resistance



Scratch and wear-resistant



Light fastness



Ease of maintenance and cleaning



Hygienic

Most important characteristics according to EN 438 classification for both Compact and HPL material

≈ 70% Paper  
≈ 30% Thermosetting Resins

Overlay (only for printed decors)

Decorative Paper

Black Core

Decorative Paper

Overlay (only for printed decors)

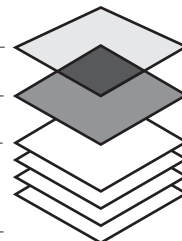


≈ 70% Paper  
≈ 30% Thermosetting Resins

Overlay (only for printed decors)

Decorative Paper

Kraft Paper



## Fire Classification

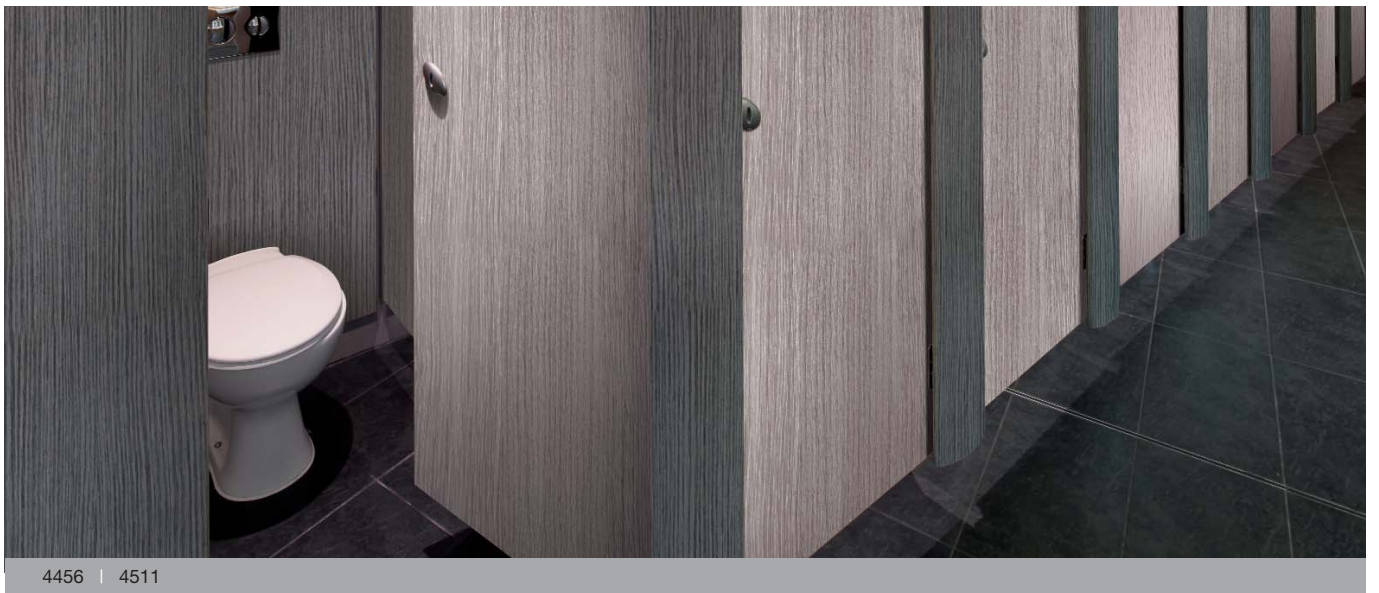
All Arpa Athlon decors in Compact grade (CGS) achieve Euroclass C as standard. On request FR Grade (CGF) will achieve Euroclass B. (Please note this is special production and subject to lead times). For HPL fire classification please refer to Arpa UK for advice on achieving the highest classification for composite panels.



## Greenguard - Indoor Air Quality - Guaranteed

The GREENGUARD Environmental Institute is an industry independent, third party certification organization that qualifies products for low chemical emissions (VOC's). Arpa high pressure laminates have been certified according to GREENGUARD Indoor Air Quality Certification Program for low Emitting Products.

# UK COLLECTION BY ATHLON



# DELIVERY PROGRAMME

\* Availability  
2150 is nominal as cutting tolerance will apply.  
The LRV shown in this table have been measured  
in the Arpa Industriale Laboratory, in accordance with EN 13721/04

## COLORSINTESI



All decors in Erre (R) surface finish

Code Name	LRV	Compact			HPL 0.8 mm PF		Colour referencing			Edge banding referencing		
		10 mm 3660x1600	12,7 mm 2150x1850	12,7 mm 4300x1850	0.8 mm 4200x1600	PF 3050x1300	RAL	PANTONE	NCS	Rehau	Rehau ABS	Doliken Express
0001 Bianco	82	•	•	•	•	•	9016	10A01 (CS)	S 0500-N	RAL 9010	9147/14	SF3646
0204 Magnolia	75		•	•	•	•	S 0505-Y20R			65661/14	SF0711	
0211 Grigio Perla	43	•	•	•	•	•	7038	428U	S 2502-B		65117/18	SF4861
0218 Beige	62		•	•	•	•	1015	468U	S 1010-Y30R	94529/14	13749/14	SF561D
0234 Grafite	25		•	•	•	•	7004	430U	S 4502-B	62906	68005/14	SF315E
0273 Azzurro Ice	65		•	•	•	•	7047		S 1010-R80B		77177/13	
0509 Nero	0,37		•	•	•	•	9004	Black C	S 9000-N		76971/33	SF0101
0517 Verde Malva	61		•	•	•	•	6019	579C	S 1020-G40Y		69346/18	SF617A
0527 Grigio Argento	52		•	•	•	•	7047	427U	S 1500-N	67151	98474/14	SF1330
0561 Rosso Devil	10	•	•	•	•	•	3020	186C	S 1080-Y90R	76525	76961/13	SF447C
0571 Rosso Oriente	4		•	•	•	•	3003	195C	S 2570-R	95425/18	RAL 3003	SF404C
0593 Blu Faenza	5		•	•	•	•	5010	287U	S 4050-R80B	RAL 5010	97486/14	SF0436
0594 Fucsia	9	•	•	•	•	•	4006	247U	S 2060-R30B	77351		SF0179
0605 Glicine	31	•	•	•	•	•	529U	S 2040-R50B		62527		
0607 Lavanda	29	•	•	•	•	•	543U	S 2030-R90B	62907	77193	SF119A	
0619 Blu Artico	13		•	•	•	•	2781C	S 2060-R70B		61498/13	SF482B	
0623 Grigio Ferro	8	•	•	•	•	•	432U	S 7500-N	99531	95740/14	SF089A	
0638 Rosso Fragola	22		•	•	•	•						
0641 Crocus	45		•	•	•	•	277U	S 1020-R80B		1315E		
0644 Turchese Pastello	36	•	•	•	•	•	6034	5493U	S 2020-B50G		19618/14	SF5993
0660 Verde Acido	43	•	•	•	•	•	375C	S 0570-G30Y		61753	SF40A1	
0670 Giallo Altamira	64	•	•	•	•	•	1018	107C	S 0570-Y	77089		
0682 Arancio	38	•	•	•	•	•	1375C	S 0570-Y50R	1983E	15481/14	SF261D	
0711 Blu Baia	12	•	•	•	•	•	5015		S 3050-R90B		77092/13	

## WOODS

All decors in Erre (R) surface finish

Code Name	LRV	Compact			HPL 0.8 mm PF		Colour referencing			Edge banding referencing		
		10 mm 3660x1600	12,7 mm 2150x1850	12,7 mm 4300x1850	0.8 mm 4200x1600	PF 3050x1300	RAL	PANTONE	NCS	Rehau	Rehau ABS	Doliken Express
1852 Faggio Giapponese	38	•	•	•	•	•					579E/13	DC954
4303 Canaletto	18		•	•	•	•				516V		DC656
4327 Acero Italiano	61	•	•	•	•	•					4919/01	
4342 Noce Domino	7		•	•	•	•						
4390 Zebrano Naturale	20	•	•	•	•	•				340V	579E/13	DC346P
4456 Rovere Zadar	4		•	•	•	•				735V	1146W/33	DC12LO
4511 Rovere Fumo	22	•	•	•	•	•				1813		
4519 Rovere Asburgo	64		•	•	•	•				1437		
4520 Rovere Asburgo Nat.	37		•	•	•	•				731V		
T202 W74-01 Oak	35	•	•	•	•	•						

## MATERIC EXPRESSIONS

All decors in Erre (R) surface finish

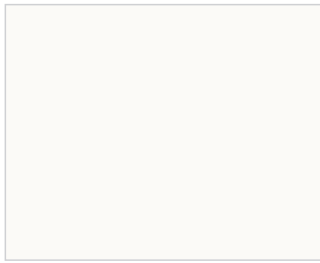
Code Name	LRV	Compact			HPL 0.8 mm PF		Colour referencing			Edge banding referencing		
		10 mm 3660x1600	12,7 mm 2150x1850	12,7 mm 4300x1850	0.8 mm 4200x1600	PF 3050x1300	RAL	PANTONE	NCS	Rehau	Rehau ABS	Doliken Express
0997 Selenio Nero	4	•	•	•	•	•						
1017 Selenio Silver	27		•	•	•	•				670E		
3194 Corolam Bianco	63	•	•	•	•	•						
3283 Abstract Aluminium	35		•	•	•	•					5363/00	
9128 Spot Rosso Fragola	20		•	•	•	•						
9131 Spot Lavanda	25	•	•	•	•	•						
9133 Spot Turchese Pastello	25	•	•	•	•	•				17820		
9134 Spot Azzurro Ice	50		•	•	•	•						
9136 Spot Grigio Perla	38		•	•	•	•						
9137 Spot Bianco	62		•	•	•	•						

### Disclaimer

The disclaimer that follows is a summary of the applicable full disclaimer (which can be found on arpaindustriale.com). The information provided by Arpa Industriale S.p.A. ("Arpa") in this document is solely indicative. Arpa is unable to warrant the accuracy and completeness of this information. No rights can be derived from the information provided; the use of the information is at the other party's risk and responsibility. This document does not guarantee any properties of Arpa's products. Arpa does not warrant that the information in this document is suitable for the purpose for which it is consulted by the other party. The document does not contain any design, structural calculation, estimate or other warranty or representation that customers and third parties may rely on. Colours included in Arpa's communications (including but not limited to printed matter) and in samples of Arpa's products may differ from the colours of the Arpa's products to be supplied. Arpa's products and samples are produced within the specified colour tolerances and the colours (of production batches) may differ, even if the same colour is used. The viewing angle also influences the colour perception.

Customers and third parties must have a professional adviser inform them about (the suitability of) the Arpa's products for all desired applications and about applicable laws and regulations. Arpa reserves the right to change (the specifications for) its products without prior notice. To the maximum extent permitted under applicable law, Arpa is not liable (neither contractual nor non-contractual) for any damage arising from or related to the use of this document, except if and to the extent that such damage is the result of wilful misconduct or gross negligence on the part of Arpa and/or its management. All oral and written statements, offers, quotations, sales, supplies, deliveries and/or agreements and all related activities of Arpa are governed by the General Terms and Conditions of Arpa Industriale S.p.A. All oral and written statements, offers, quotations, sales, supplies, deliveries and/or agreements and all related work of Arpa USA Inc. ("Arpa USA") are governed by the Arpa USA General Terms and Conditions of Sale. All intellectual property rights and other rights regarding the content of this document (including logos, text and photographs) are owned by Arpa and/or its licensors.

# COLORSINTESI



0001 LRV 82



0204 LRV 75



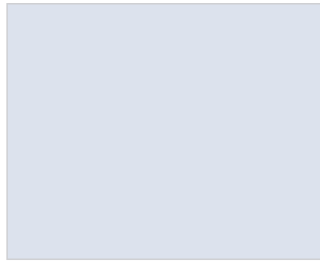
0211 LRV 43



0218 LRV 62



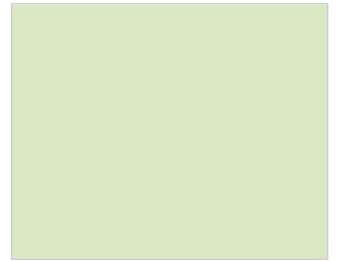
0234 LRV 25



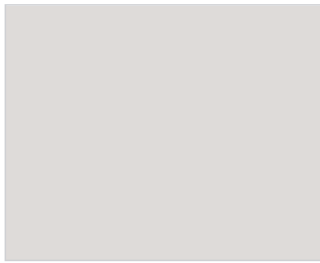
0273 LRV 65



0509 LRV 0,37



0517 LRV 61



0527 LRV 52



0561 LRV 10



0571 LRV 4



0593 LRV 5



0594 LRV 9



0605 LRV 31



0607 LRV 29



0619 LRV 13



0623 LRV 8



0638 LRV 22



0641 LRV 45



0644 LRV 36



0660 LRV 43



0670 LRV 64



0682 LRV 38



0711 LRV 12

# WOODS



1852 LRV 38



4303 LRV18



4327 LRV 61



4342 LRV 7



4390 LRV 20



4456 LRV 4



4511 LRV 22



4519 LRV 64



4520 LRV 37

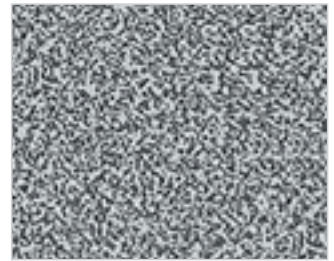


T202 LRV 35

# MATERIC EXPRESSIONS



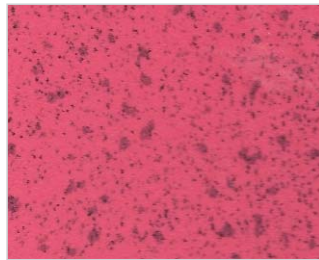
0997 LRV 4



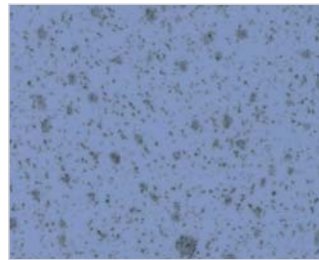
1017 LRV 27



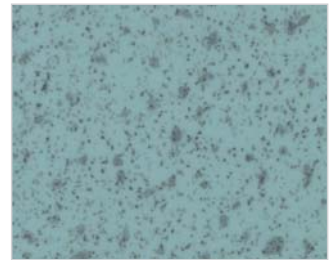
3194 LRV 63



9128 LRV 20



9131 LRV 25



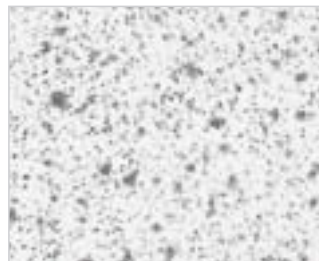
9133 LRV 30



9134 LRV 50



9136 LRV 38



9137 LRV 62



3283 LRV 35

# COLOUR THERAPY

---



0638 | 0623



0670 | 0711



0619 | 3194



0561 | 0001

# Samples Requests

Mail to:  
[samplesuk@arpaindustriale.com](mailto:samplesuk@arpaindustriale.com)

**Arpa UK Ltd**  
Unit 32, Brookhouse Road,  
Parkhouse Industrial Estate West,  
Newcastle-under-Lyme,  
Staffordshire ST5 7RU - Great Britain  
Tel. +44 (0)1782 561914  
Fax +44 (0)1782 561846  
[arpauk@arpaindustriale.com](mailto:arpauk@arpaindustriale.com)